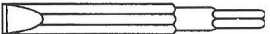
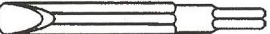




RB - 1011 ● 1012 ● 1013

CHIPPING HAMMER & NO.3 RIVETER

CHIPPING CHISELS AVAILABLE AT EXTRA COST

Flat Chisel		Overall Length 205mm	Stock No. E2327 835	Chisel of longer length and / or Round Shank can be supplied on request
Half Round Chisel		Overall Length 205mm	Stock No. E2330 835	
Round Chisel		Overall Length 205mm	Stock No. E2329 835	
Blank Chisel		Overall Length 205mm	Stock No. E2328 835	

LUBRICATIGN OILS AND GREASES FOR PNEUMATIC TOOLS

RB Products	Hindustan Petroleum	Bharat Petroleum	Indian Oil	Indrol
ROTARY AIR MOTORS OF DRILLS, GRINDERS, IMPACT WRENCHES SCREW DIRVERS, AND SUMP PUMPS	SPINTEK-22	BHARAT HYDROL - 22	SERVOSPIN 22	CASTROL HYSPIN AWS-22
GREASES FOR PLENETARY AND ENCLOSED GEARS, HAND PACKED, O-RINGS & GOV. LEVERS	LINTHON-2	BHARAT MP GREASE 2	SERVOGEM 2	CASTROL B.B. AP-2
IMPACT WRENCHES CLUTCH OIL.	ENKLO-68	---	SERVOSYSTEM 68	CASTROL HYSPIN AWS-68
SUMP PUMP SPINDLE, BEARINGS & GREASE SEALS	LINTHON-2	---	SERVOGEM-3	CASTROL B.B. AP-2
ROCK DRILLS, DEMOLITION TOOLS, RIVETING, CHIPPING AERO HAMMERS, RAMMERS AND SCALERS	SPINTEK-22	BHARAT HYDROL 22	SERVOSPIN 22	CASTROL HYSPIN AWS-22
AIR HOIST	CYNDOL-1500	---	SERVOCYL -M-1500	---

RR PNEUMATIC TOOLS

C - 27A, GHATKOPAR INDUSTRIAL ESTATE, GHATKOPAR WEST.
MUMBAI 400086. PH: 022-25006801
E MAIL: rrpneumatictools@gmail.com



RB 1011-1012-1013

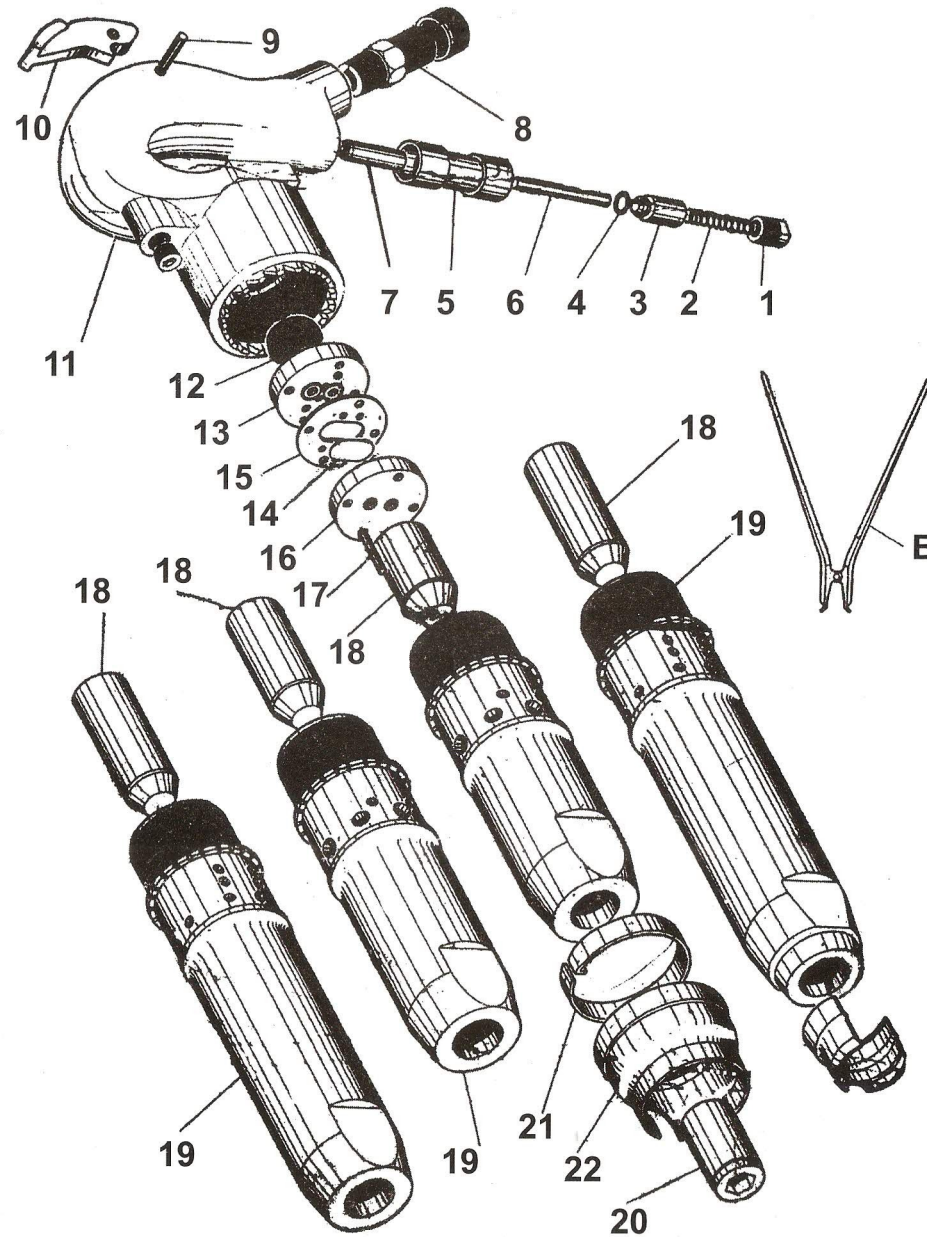
CHIPPING HAMMER & NO.3 REVETER



SPARE PART LIST & MAINTENANCE INSTRUCTIONS

RB - 1011 • 1012 • 1013
CHIPPING HAMMER & NO.3 RIVETER

RB - 1011 • 1012 • 1013
CHIPPING HAMMER & NO.3 RIVETER



Illust. No.	Stock No.	Description Common Parts for all models	Qty.
1	E 32 66 093	Throttle valve plug	1
2	* R 34 18 705	Spring	1
3	E 12 24 093	Throttle valve	1
4	* R 01 16 705	'O' ring	1
5	E 72 54 835	Tube	1
6	* R 11 29 405	Push pin	1
7	E 95 10 835	Throttle valve push pin bushing	1
8	H 17 16 835	Air inlet bushing	1
A	H 17 51 809	Nipple (1/2" BSPT X 1/2" BSP)	1
9	R 11 28 405	Throttle valve lever pin	1
10	F 28 36 835	Throttle lever	1
11	D 52 25 835	Handle	1
12	R 46 11 005	Screen	1
13	E 50 62 835	Upper valve case lid	1
14	* R 48 06 405	Valve	1
15	* E 50 06 835	Valve case	1
16	E 50 61 835	Lower valve case lid	1
17	R 48 07 005	Valve case dowel	2
18	* --	Piston	--
19	--	Cylinder	--
20	* --	Chisel bushing (Round) Ref. Chart	--
20	* --	Chisel bushing (Hex)	--
21	* I 38 17 835	Lock clip	1
22	I 37 09 835	Exhaust shield	1
B	R 37 72 705	Lock shield plier	1
C	I 38 03 842	Snap clip (for No.3 Riveter)	1
--	B 99 63 808	Handle complete with bushing consists of Sr. No. 1 to 12 & A	1
--	B 94 77 845	Throttle valve assembly consists Sr. No. 3 & 4	1
--	B 99 64 808	Handle with throttle valve tube and bushing consists of Sr. No. 5,7,8 & 11	1
--	B 99 54 835	Handle & tube assembly (Available complete assy. for sale) consists of Sr. No. 5,7 & 11	1
--	B 94 79 835	Valve case assembly consists of Sr. No. 13,14,15,16 & 17	1

RB - 1011 ● 1012 ● 1013

CHIPPING HAMMER & NO.3 RIVETER

Sr. No.	Description	Stock No.				Qty.
		1011	1012	1013	No. 3 Riveter	
18	Piston	E 15 18 813	E 15 19 808	E 15 20 808	E 15 20 808	1
19	Cylinder	D 85 25 839	D 85 26 840	D 85 27 841	D 85 50 842	1
20	Chisel bushing * (Round)	E 95 96 808	E 95 96 808	E 95 96 808	--	1
20	Chissel Bushng * (Hex)	E 83 56 808	E 83 56 808	E 83 56 808	--	1
--	Cylinder & Sleeve of Sr. No. 19 & 20	A 99 56 839	A 99 58 840	A 99 60 841	--	1

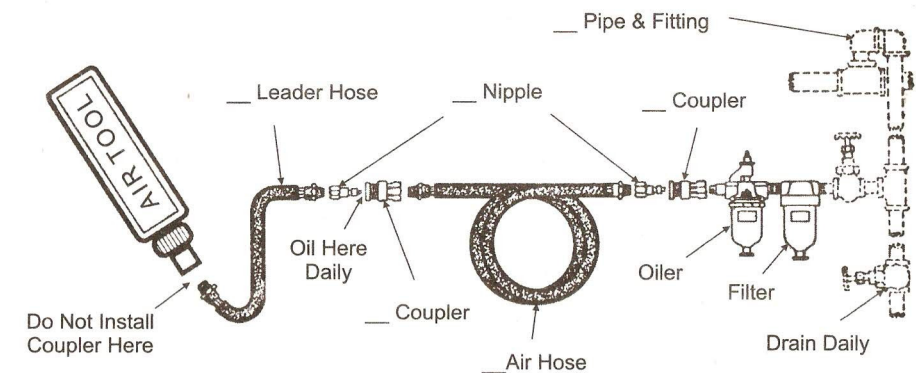
Note : Parts indicated by (*) are fast wearing parts & are recommended for stocking.
Parts indicated by C is not illustrated in the drawing.

PLEASE ORDER SPARE PARTS ON STOCK NOS.

GENERAL INSTRUCTIONS

AIR SUPPLY

For satisfactory performance, 90 PSIG (6.2 bar) of clean, dry air is required AT THE TOOL while tool in operation. Whip hose 3/8" I.D. may be used at the air inlet, but longer runs should be 1/2" hose size or larger, used with couplings of a minimum 7/16" I.D. The use of air Line Separator and Filter and a Line Pressure Regulator should mounted as closely as possible to the tool which is recommended.



INSTRUCTIONS FOR SALE OPERATION

BEFORE PLACING THIS TOOL IN OPERATION, READ THE FOLLOWING SECTIONS EXCERPTED FROM THE COMPRESSED AIR AND GAS INSTITUTE'S SAFETY CODE FOR PORTABLE AIR TOOLS". (APRIL 1974).

EYE PROTECTION

Eye and face protection shall be required where there is a reasonable probability of injury that can be prevented by such protection. Suitable eye protectors shall be provided where machines or operations present hazard of flying objects. Eye protections should be worn at all times while operating power tools.

RETAINERS

A retainer shall be integral with or installed on a percussion tool which, without such as retainer, can eject the chisel, rivet set, punch or such equipment, when the tool is operated off a work surface.